

# Massive and Dynamic Deployment of Minimal Digital Ecosystem Tools in Burkina Faso's Health Districts: An Asset for Scaling Up but a Challenge for Intervention Evaluation

Authors : Joël Arthur KIENDREBEOGO, Yamba KAFANDO, Issa KABORE, David ZOMBRE, Rémi KABORE

Mai 2024, Burkina Faso.

## Contexte

- In July 2023, the Ministry of Health and Public Hygiene (MSHP) of Burkina Faso, in collaboration with several NGOs and with financial support from the Bill and Melinda Gates Foundation, launched an innovative project called "Ecosystème Digital Minimal (EDM).
- This project aims to select a series of digital solutions and implement them simultaneously in health facilities and at the community level in the health districts of Ziniaré and Ténado.
- The goal is to promote optimal complementarity and synergy among these different technologies, in order to improve the effectiveness of health interventions.

## Main objectives of the intervention

- Improve the efficiency, quality, and equity of the policy on free healthcare and primary healthcare services (PHS).
- Significantly contribute to the reduction of maternal and child mortality.
- Minimize catastrophic health expenditures for households.
- Improve the performance management of the PHS.
- Optimize decision-making through the analysis of data from digital tools

## Choice and Description of MDE Tools

- EDM includes a minimal suite of 8 digital tools (see fig 1).
- With the exception of the FIS, all these tools are pre-existing digital solutions in the Burkinabe health system.
- The main criterion for selecting these tools was their widespread use in the intervention DS.
- This approach aims to minimize the cost of deployment and the risks of failure in terms of adherence and adoption by stakeholders

## Key Messages

- 1 Almost all (7 out of 8) of the digital tools selected for the implementation of the EDM were deployed in each of the intervention DS
- 2 Given the highly dynamic nature of the intervention, tools have already been deployed in the pilot health districts: three (3) in Manga and seven (7) in Sapouy
- 3 The FIS is already deployed at the national level and many tools are present in all the HDs of the country, which could facilitate the scaling up of the intervention
- 4 The opportunistic deployment pace of EDM tools, determined by the MSHP and developers, is not based on research considerations, which poses methodological challenges for the intervention assessment

## Intervention Setting

- EDM is implemented in the DS of Ziniaré and Ténado, selected by the MSHP as intervention sites.
- For the evaluation of the intervention, the DS of Manga and Sapouy have been chosen as control DS

## Objective of the briefing note

This note provides an overview of the state of deployment of EDM tools, in both the intervention districts, the control districts, and the other districts of the country, for the period from July 2023 to April 2024

*NB: By "deployment," we mean the situation in which training has been provided to the actors and the usage codes for the tools have been assigned. This does not include the actual use of digital tools by the providers.*



Training session for health workers by ST-FRS on the use of the FIS in Ziniaré

Crédit photo: Issa Kaboré



# Digital Minimal Ecosystem and its tools



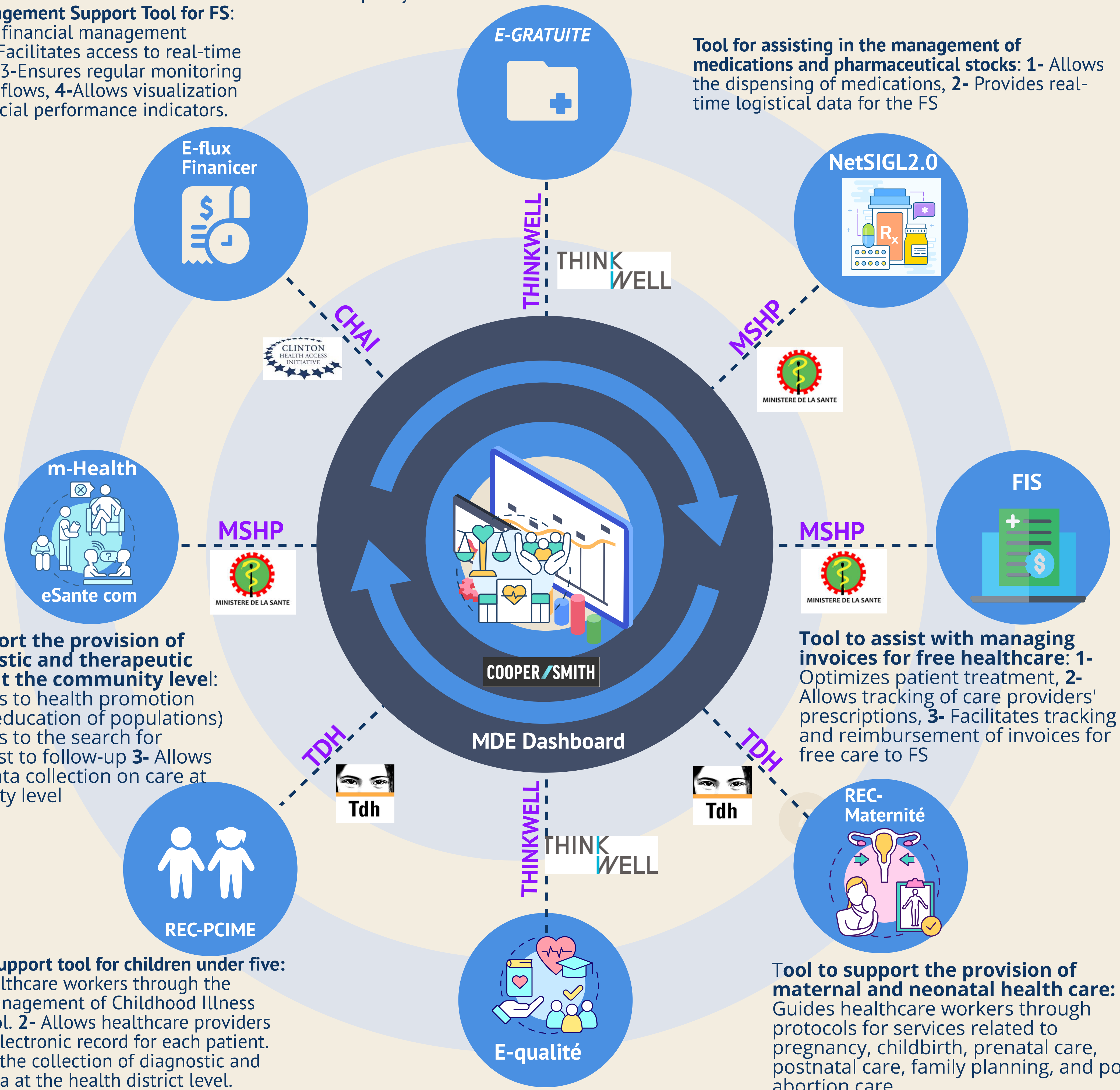
**Tool to assist in managing the policy of free healthcare.** 1-Allows for the collection of data on invoices issued by FS, 2-Enables the monitoring of payments and the effectiveness of the free care policy, 3-Improves the transparency and accountability of the free care policy

**Financial Management Support Tool for FS:**

1-Improves FS financial management procedures, 2-Facilitates access to real-time financial data, 3-Ensures regular monitoring of FS financial flows, 4-Allows visualization of key FS financial performance indicators.

**Tool for assisting in the management of medications and pharmaceutical stocks:**

1- Allows the dispensing of medications, 2- Provides real-time logistical data for the FS



**Tool to support the provision of care (diagnostic and therapeutic guidelines) at the community level:**

1- Contributes to health promotion (awareness, education of populations) 2- Contributes to the search for individuals lost to follow-up 3- Allows systematic data collection on care at the community level

**Tool to assist with managing invoices for free healthcare:**

1- Optimizes patient treatment, 2- Allows tracking of care providers' prescriptions, 3- Facilitates tracking and reimbursement of invoices for free care to FS

**"Healthcare support tool for children under five:**

1- Guides healthcare workers through the Integrated Management of Childhood Illness (IMCI) protocol. 2- Allows healthcare providers to create an electronic record for each patient. 3- Facilitates the collection of diagnostic and treatment data at the health district level.

**Tool to support the provision of maternal and neonatal health care:**

1- Guides healthcare workers through protocols for services related to pregnancy, childbirth, prenatal care, postnatal care, family planning, and post-abortion care. 2- Improves data collection and the quality of monitoring for maternal and neonatal health

**Tool to aid in the evaluation and improvement of care quality in health facilities.**

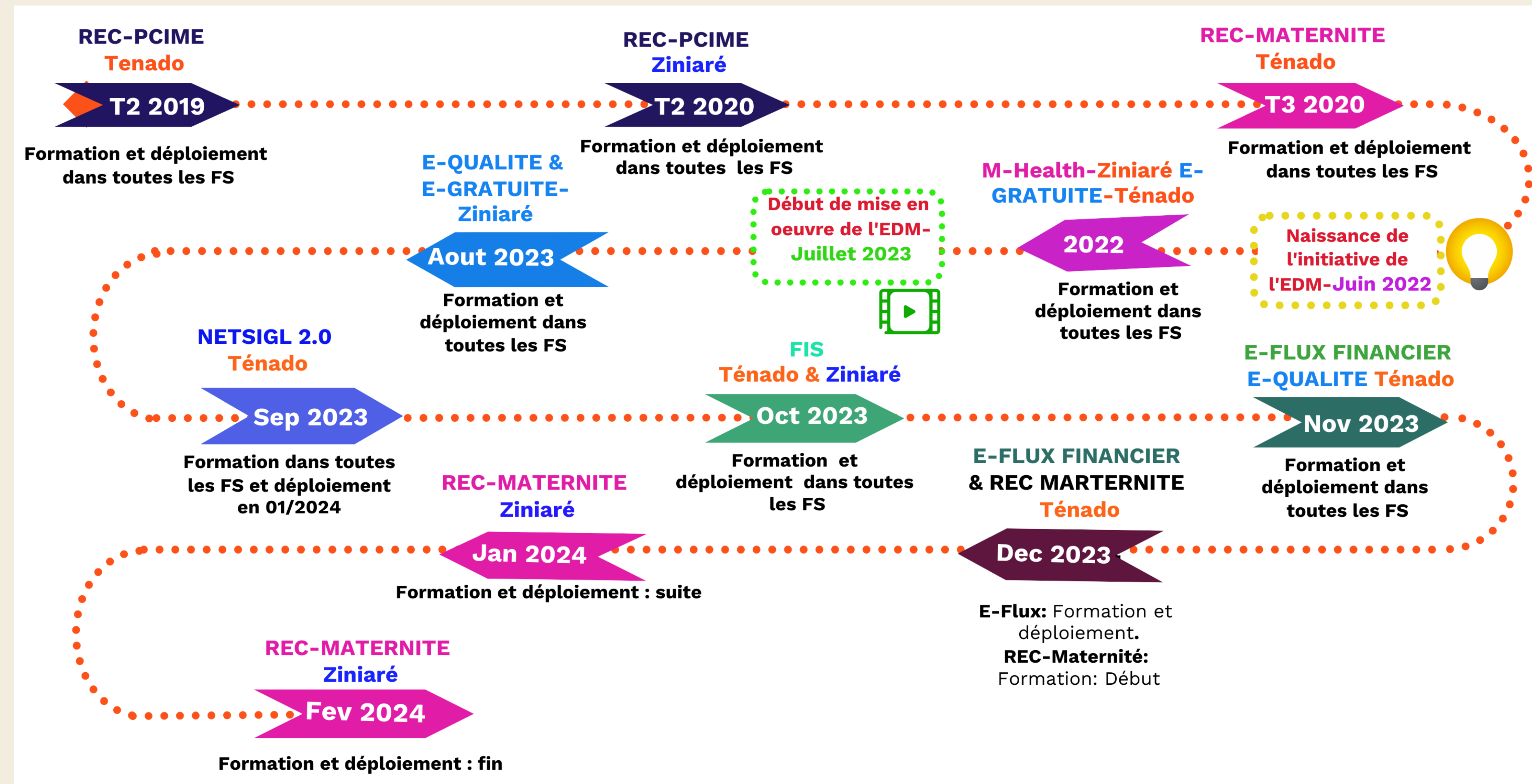
1- Enables the conduct of internal and external audits of health facilities for certification at various levels of healthcare, 2- Allows for the calculation of a quality score and the taking of measures to improve quality in health facilities, 3- Helps to enhance the capabilities of health workers for continuous quality improvement in health facilities

# Dynamic Deployment of MDE Tools

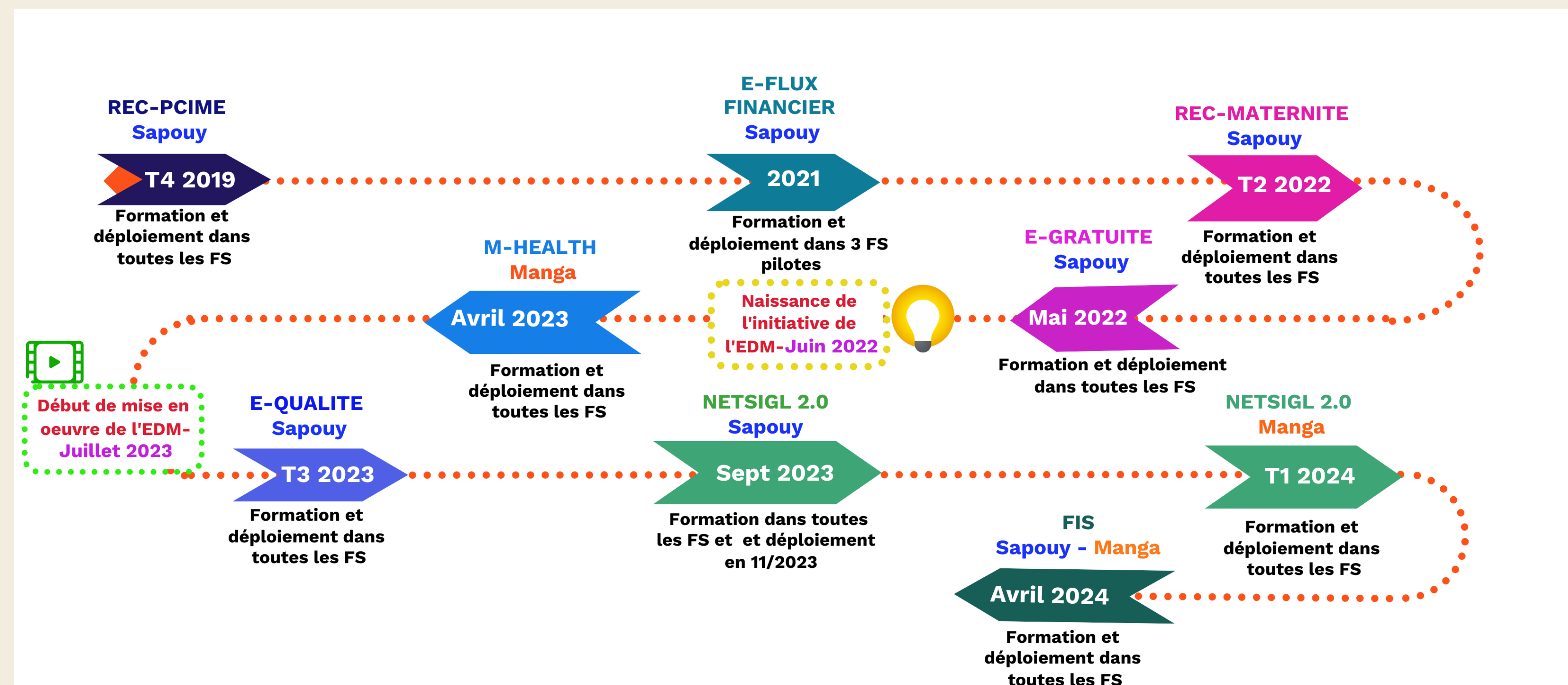
In July 2023, when the EDM was first implemented, there were three (3) tools in Ténado and two (2) in Ziniaré (intervention districts) versus one (1) tool in Manga and three (3) in Sapouy (control district).

In late April 2024, there were seven (7) tools in Ziniaré and Ténado (intervention districts) as opposed to three (3) in Manga and seven (7) in Sapouy (control district).

## Chronology of training and deployment: intervention districts

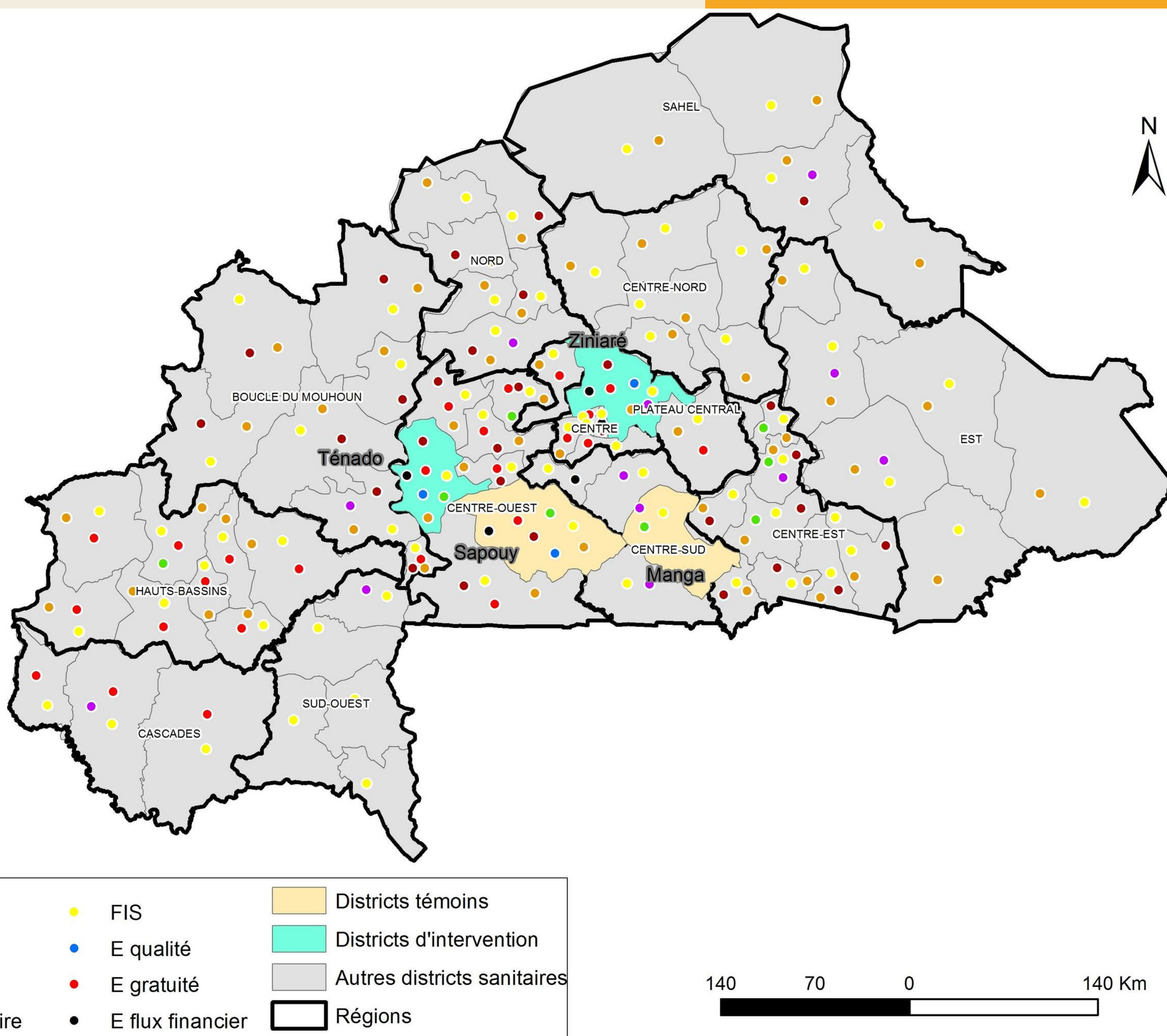


## Chronology of training and deployment: intervention districts



# Mapping the Deployment State of MDE Tools

As of the writing of this note (late April 2024), it is observed that several EDM tools are already deployed to various degrees in the field, both in the intervention DS and in the control DS. Similarly, some EDM tools are also deployed in other DS across the country (see Map 1).



Source: BNDT 2012

Date: Avril 2024

Auteur: Yamba Kafando

## What to remember from the deployment of MDE tools?

- In the intervention DS of EDM, 7 out of 8 digital tools are already deployed. NET-SIGL 2.0 and community m-Health are awaiting deployment in the DS of Ziniaré and the DS of Ténado, respectively.
- Among the tools that have been selected for the implementation of EDM, 5 are already deployed in the DS of Sapouy and 2 in the DS of Manga.
- The FIS is already deployed across all DS in the country.
- Two other tools, REC PCIME and REC-Maternity, are present in nearly two-thirds (63%) and just over one-third (35%) of the country's DS, respectively.
- Half of the digital tools selected for the implementation of EDM (NET SIGL 2.0, E-financial flow, community m-Health, E-quality) are very minimally deployed in the DS of the country

## What are the implications?

- The systematic deployment of tools without distinction across all health districts (DS) poses evaluation challenges, as the tools are also present in the control DS.
- The dynamic deployment and the presence of the tools in the control DS necessitate a pragmatic approach to evaluation that involves regularly adapting the methodological approach to ensure robust results